

**Money off your energy bill – Application needs to be in by 28 JUNE**

If you live in Lidlington and were here on 31 December 2018 you are entitled to **money off your energy bill**.

By filling in a very simple form and supplying a copy of your energy bill covering 31 December 2018 you will get **money off your energy bill every year**.

Do you need help with the form? Do you have questions? **Citizens Advice Bureau (CAB) can help you**.

They are in the **Methodist Church Hall**, Church St every **Wednesday 6.30 – 8pm**.

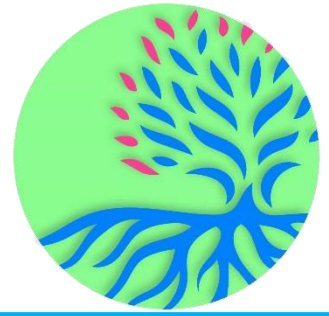
They will be running a short **help session starting at 6.45pm**.

Ring **Linda 07752 677 622 to book your place or just turn up**

# LIDLINGTON CHURCH

bringing people together

www.lidlingtonchurch.org.uk



## Sunday 26<sup>th</sup> May

Welcome to

10.45am – Morning Worship with Stephen Plummer and worship led by The AJ's

## Next week – 2<sup>nd</sup> June

10.45am – Communion with Jonathan and worship led by Tim



## Dates for June

- Tues 4<sup>th</sup>** Hour of Prayer – In the chapel, 7pm
- Fri 7<sup>th</sup> – Sun 9<sup>th</sup>** Chellington Weekend
- Tues 18<sup>th</sup>** Breakfast @ Coffee Morning – Breakfast served from 10-11.45am in the Hall
- Tuesdays** Coffee Morning – 10am-12pm in the Hall  
Homegroup – 12.30pm, call Linda on 403647 for venue information
- Wednesdays** Homegroup – 8pm, Call Jeff on 402647
- Thursdays** Prayer Group – Held in the Hall, 1.30pm, fortnightly. 6<sup>th</sup> & 20<sup>th</sup> June

	<u>Time</u>	<u>Service</u>	<u>Venue</u>	<u>Worship</u>	<u>Rock</u>	<u>Door</u>
<b>2<sup>nd</sup></b>	10.45am	<b>Communion</b> <i>With Jonathan Peall</i>	Chapel	Tim	Linda	Esmé
<b>9<sup>th</sup></b> <i>Chellington</i>	10.45am	<b>Morning Worship</b> <i>With Sian Hiscocks</i>	Chapel	The AJ's	Diane	Pat
<b>16<sup>th</sup></b> <i>Father's Day</i>	10.45am	<b>Morning Worship</b> <i>With Tim Mason</i>	Chapel	The AJ's	Linda	Esmé
	6pm	<b>Evening Communion</b> <i>With Rev. Caroline Weaver</i>	Chapel	Jeff		N/a
<b>23<sup>rd</sup></b>	10.45am	<b>Morning Worship</b> <i>With Tim &amp; Tess – Chellington 2019</i>	Chapel	Tim	TBC	Pat
<b>30<sup>th</sup></b>	10.45am	<b>United Service with Stewartby</b> <i>With Sian/Linda</i>	Lidlington Chapel	The AJ's	Tess	Esmé

Lunch Club is back! Starting on Wednesday 5<sup>th</sup> June – contact Diane at [diane.hinde@hotmail.com](mailto:diane.hinde@hotmail.com) for more info... places are limited so book quickly!

The Citizens Advice Bureau are now running a drop in service in Lidlington, held at Lidlington Church Hall, Church Street (opposite the shop). If you need help or advice with problems such as benefits, debt, employment, housing, consumer and family matters then pop in between 6.30pm & 8pm on Wednesdays.

Please see overleaf for details on how to claim money off your energy bill.

### Local Contacts

#### Lidlington Church Leaders:

Jeff Bulled: 01525 402647 Tim Mason: 01525 404938  
Sian Hiscocks (Pastoral): 07856 924058

Rev Caroline Weaver (Methodist): 01234 348091  
Rev Quentin Chandler (Anglican): 01525 840477

#### Hall Bookings:

Jean Peall: 01525 280059